

WINDHAM



DAMSON



TEABERRY



SHRIMP



WOODROSE

CUSTOM COLORS CAN BE MATCHED

15 Colors, also White & Black ♦ 100% Polyester

Cubicle Fabric ♦ Machine Washable at 160° F

Passes NFPA 701 2004 Small Scale Test Method #1

Colors are subject to dye lot variation

FLAME & WASH TEST AVAILABLE

AVAILABLE IN PIECES AT SURCHARGE



BISQUE



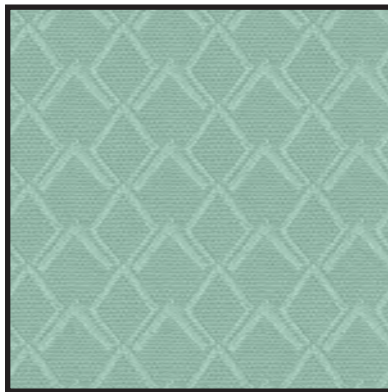
DUNE



PEARL



PARADISE



REFLECTION



FOREST



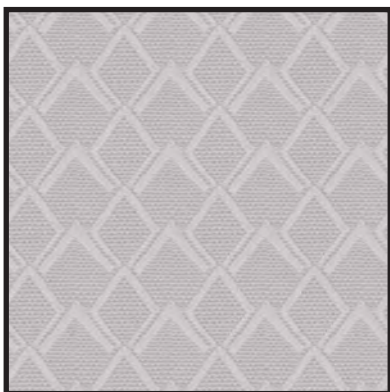
LILAC



CHINA BLUE



POWDER



GULL



PUTTY



WINDHAM

- **CUSTOM COLORS CAN BE MATCHED**
- Flame Resistant - contains Inherently FR yarn
- 15 Colors, also White & Black
- Engineered for Institutional uses
 - Cubicle
 - Draperies
 - Bedspreads
- 70" - 72" Wide
- 100% Polyester
- Machine Washable at 160° F
- Weight approx. 11 oz. Per Linear Yard
- **Special Finishes Available, e.g., Anti-microbial**
- Passes NFPA 701 2004 Small Scale Test Method #1



Care instructions on back cover

WINDHAM



70" - 72", Inherently Flame Retardant Cubicle Fabric

WINDHAM is a novelty weave fabric made of FR Polyester for permanent flame resistant performance. It is a dimensionally stable, multi-purpose fabric engineered to withstand the abuses of institutional use. *WINDHAM* is able to sustain multiple washings with little or no shrinkage, and no change in original color appearance.

CARE INSTRUCTIONS

WASH CYCLE Machine wash in temperature not exceeding 160° F
Use synthetic detergent
Do not use bleach or fabric softeners
Do not extract
Avoid prolonged contact with heat
Do not mix with other fabrics

DRYING CYCLE Tumble dry no more than 5 minutes on synthetic cycle
at temperatures not exceeding 110° F
Remove immediately while still damp
Do not overload dryer or use excessive heat

FINISHING If fabric is rehung upon completion of drying cycle, no finishing is required
Occasional light touch up with hand iron when necessary (275° F maximum)
Use cover cloth between fabric and iron
Do not mangle
Do not use caustic soap

Colors are subject to dye lot variation • FLAME & WASH TEST AVAILABLE